

CUSTOM PRINTED BOXES

Designer Guide



thepackagingcompany.com/customshop
www.thepackagingcompany.us/customshop

Table of Contents

| | |
|---------------------------------|----|
| 01. Building Your Box | 2 |
| 1.1 Stock Size | 3 |
| 1.2 Box Material | 4 |
| 1.3 Order Quantity | 5 |
| 2. Previewing Your Box | 6 |
| 2.1 Outside | 7 |
| 2.2 Inside | 8 |
| 2.3 3D Preview | 9 |
| 3. Designing Your Box | 10 |
| 3.1 Background Artwork | 11 |
| 3.2 Colour & Pattern | 12 |
| 3.3 Panel Colour | 13 |
| 3.4 Stock Artwork | 14 |
| 3.5 Upload Artwork | 15 |
| 3.6 Text | 16 |
| 4. Saving Your Box Design | 17 |
| 5. Ordering Your Box | 19 |

BUILDING YOUR BOX

Choose your box's stock size, materials and order quantity under the Dimensions tab.

1.1 Stock Size

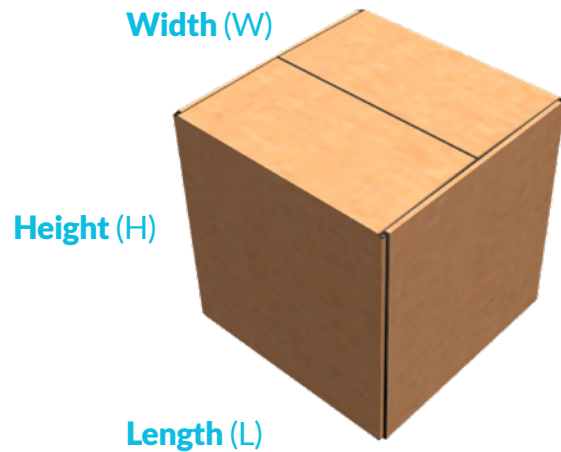
1.2 Box Material

1.3 Order Quantity

01

1.1 Stock Size

Use the drop-down menu to choose from a list of preset box sizes [1]. Measurements are Length (L) x Width (W) x Height (H).



 Dimensions

 Graphics

SELECT STOCK SIZE:

Select stock size [1]

- 4 x 4 x 4
- 6 x 6 x 4
- 6 x 6 x 6
- 8 x 8 x 6
- 10 x 8 x 6
- 10 x 10 x 8
- 10 x 10 x 10
- 12 x 12 x 6
- 12 x 12 x 8
- 12 x 12 x 10
- 12 x 12 x 12
- 14 x 14 x 10
- 14 x 14 x 12
- 14 x 14 x 14
- 16 x 16 x 10
- 16 x 16 x 14
- 16 x 16 x 16
- 18 x 18 x 18
- 20 x 20 x 20



Remember: You're choosing the inside dimensions of your finished box!

1.2 Box Material

Use the drop-down menu [1] to choose between 4 material combinations.



1. Outside White / Inside White



2. Outside Kraft / Inside Kraft



3. Outside Kraft / Inside Kraft



4. Outside White / Inside Kraft

Need a little help deciding?

Kraft : Brown corrugated material with a muted matte finish. If you're looking for a natural or eco-friendly look, this is the canvas for you. Colours will appear darker and less vibrant on Kraft, so unless that's the look you're going for, we recommend it's used for black-only printing.

White : White corrugated material with a classic matte finish. If you're looking for a clean and eye-catching look, this is the canvas for you. Colours will print vibrant and rich on White, making it the perfect choice for intricate graphics and full colour photography.

SELECT YOUR MATERIAL:

Outside White/Inside White
 Outside Kraft/Inside Kraft [1]
 Outside Kraft/Inside White
 Outside White/Inside Kraft



Remember: Colours printed on Kraft will be less vibrant due to its natural brown colour!

1.3 Order Quantity

Enter the number of boxes you'd like to order or click the arrows on the right [1]. The more boxes you order at once, the better the pricing becomes.

QUANTITY:

1

[1] ↕

Price Per Box: \$ 4.58

Total Price: \$ 4.58



Remember: Click **APPLY CHANGES** to update your box before moving on

PREVIEWING YOUR BOX

There are 3 ways to preview your box at any time: Outside, Inside and 3D Preview.

2.1 Outside

2.2 Inside

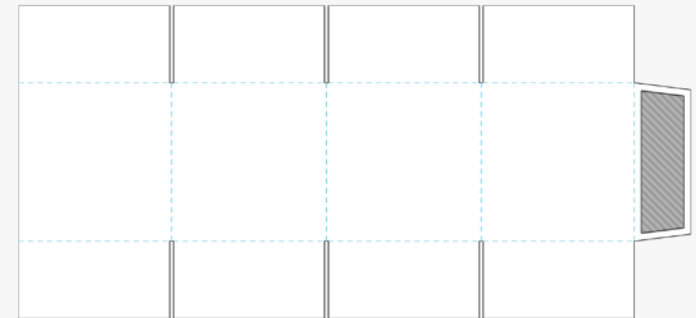
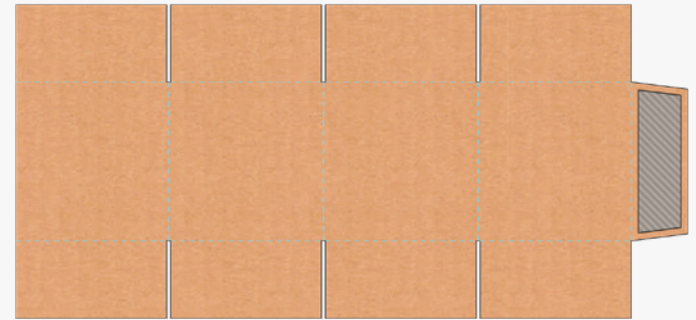
2.3 3D Preview

02

2.1 Outside

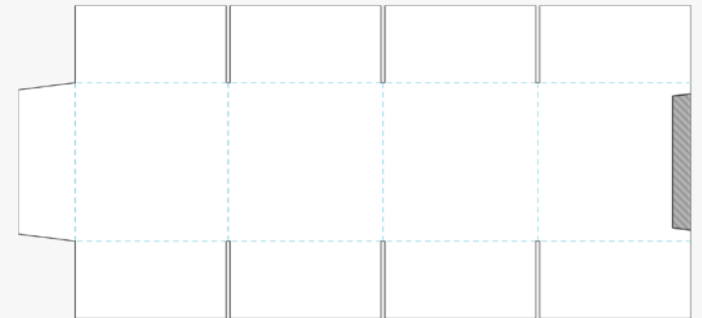
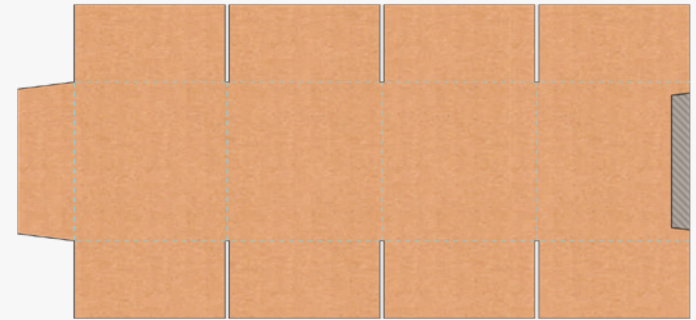
Use this tab to view and design the outside of your box. You can use the 3D Preview tab to check your box design at any time.

↑ Outside ↓ Inside 📦 3D Preview



2.2 Inside

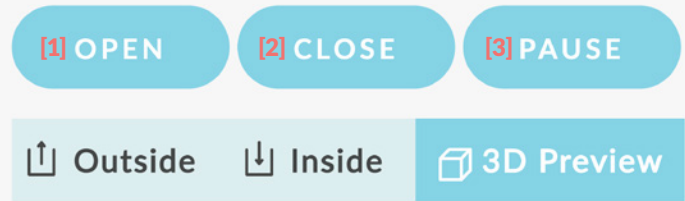
Use this tab to view and design the inside of your box. You can use the 3D Preview tab to check your box design at any time.



2.3 3D PREVIEW

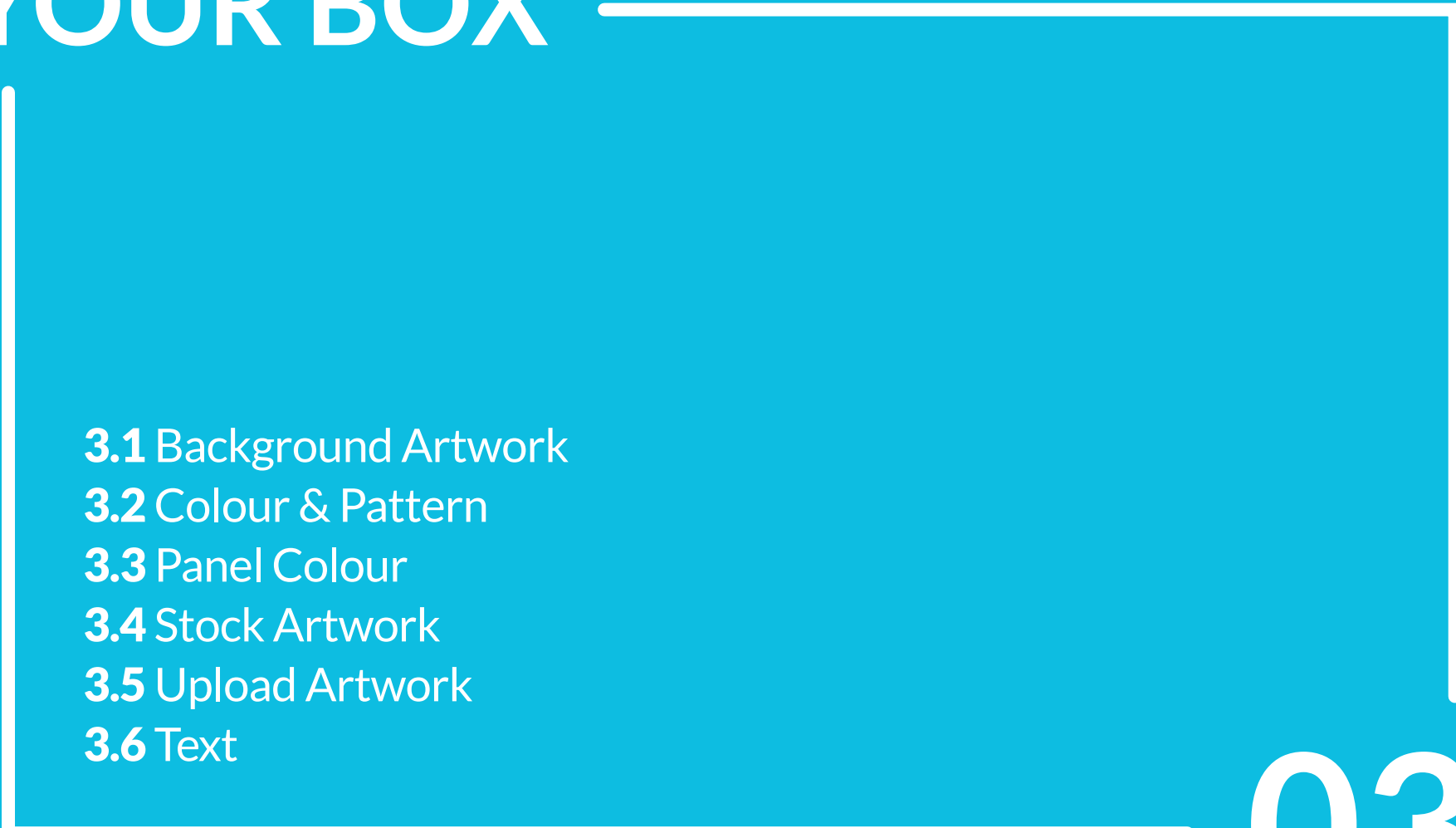
Use this tab to view your box in 3D. Click and drag your mouse to spin the box around and see it from any angle you like. Use your mouse wheel or trackpad to zoom in and out.

You can also open and close your box while in 3D Preview. Simply double click on it or use the open [1] and close [2] buttons at the top of the design panel. Pressing the pause [3] button will let you stop the opening or closing animations at any time.



Remember: You can only design your box while using the Outside and Inside tabs!

DESIGNING YOUR BOX



- 3.1** Background Artwork
- 3.2** Colour & Pattern
- 3.3** Panel Colour
- 3.4** Stock Artwork
- 3.5** Upload Artwork
- 3.6** Text

03

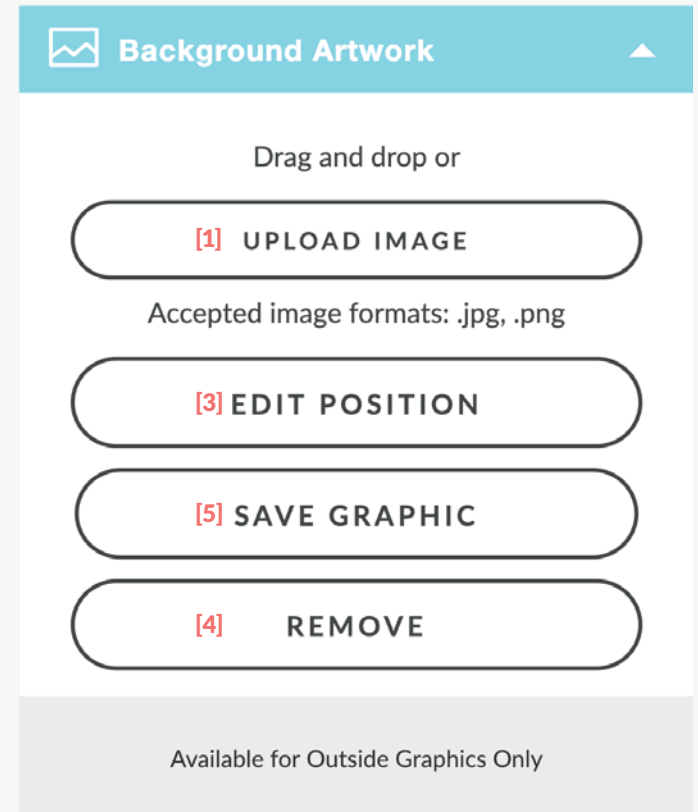
3.1 Background Artwork

Use this option to add an image to your box's background. Background artwork can only be added to the outside of the box.

1. Upload an image by using drag and drop or click on upload image [1].
2. A new window will open, allowing you to move and resize your uploaded artwork.
3. You can change artwork dimensions by clicking and dragging any of the adjustment boxes [2] on the corners. Want to maintain artwork proportions? Press and hold the **[SHIFT]** key while dragging.
4. Rotate the artwork by clicking **ROTATE LEFT** or **ROTATE RIGHT** in the upper right corner.
5. Satisfied with the placement and size of your background artwork? Click on **OK**.
6. Congrats! Your artwork is now applied to your box. Want to reposition [3] or remove [4] your artwork? Use the new options that have appeared in the Background Artwork menu.
7. Click on save graphic [5] once you're ready to continue.



Remember: Upload your artwork in CMYK (print colours). Artwork uploaded in RGB (web colours) will be converted and this may alter artwork colours and affect the final product.



3.2 Colour & Pattern

Use this option to add a colour or pattern across your entire box. This works for both Outside and Inside.

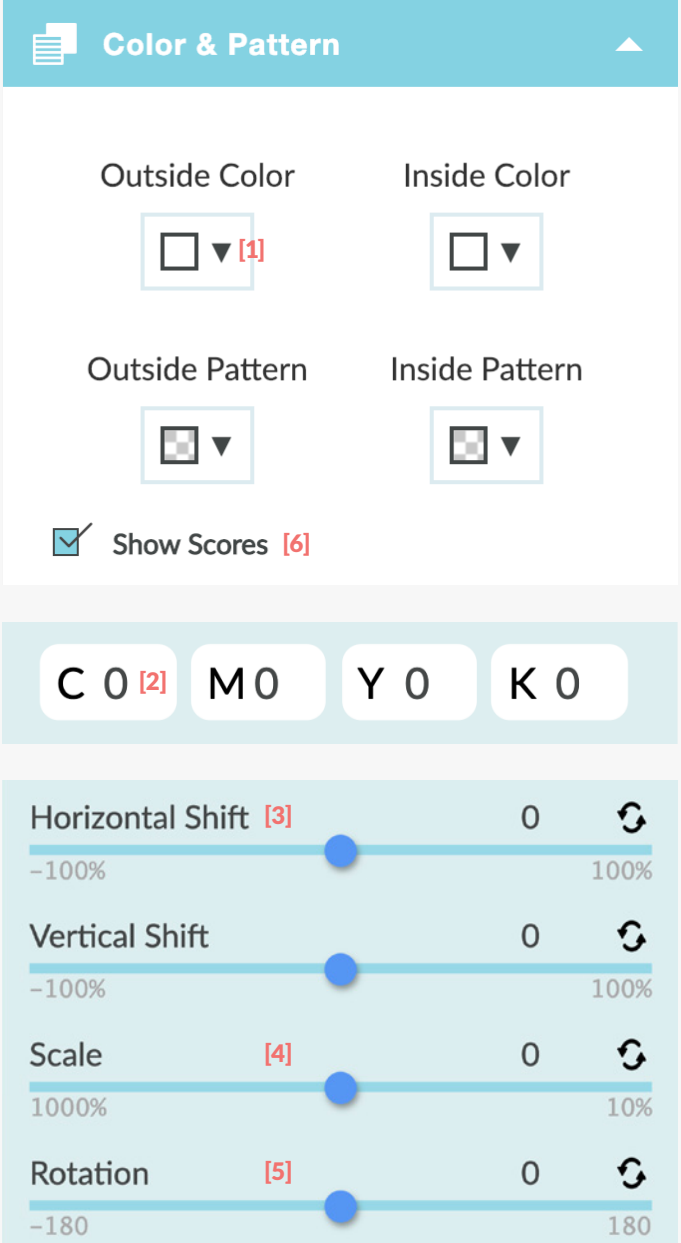
Want a background colour?

1. Click the arrows to expand the colour controls [1].
2. Use the bar on the right to find your preferred colour. Use the box on the left to choose your preferred shade. If you know your colour's CMYK code, you can enter the numbers as well [2].
3. Click on **REMOVE** if you don't want to use a background color, or click on **CHOOSE** to continue.

Want a background pattern?

1. Click on the arrows to expand the pattern controls.
2. Use the arrows to scroll through the pattern choices. You can then change the pattern's position [3], scale [4] and rotation [5] using the adjustment bars in the menu.
3. If you want to remove a background pattern, use the arrows to scroll back and click **NO PATTERN**.

Want to hide the score lines? Uncheck the Show Scores [6] box.



The screenshot shows the 'Color & Pattern' control panel. It has a teal header with a list icon and the title 'Color & Pattern'. Below the header are four sections: 'Outside Color', 'Inside Color', 'Outside Pattern', and 'Inside Pattern'. Each section contains a square color/pattern preview with a downward arrow and a red number in a box (e.g., [1]). At the bottom left of the panel is a checked checkbox labeled 'Show Scores [6]'. Below the panel is a CMYK color selection area with four buttons: 'C 0 [2]', 'M 0', 'Y 0', and 'K 0'. At the bottom is a settings menu with four sliders: 'Horizontal Shift [3]' (range -100% to 100%), 'Vertical Shift' (range -100% to 100%), 'Scale [4]' (range 1000% to 10%), and 'Rotation [5]' (range -180 to 180). Each slider has a blue knob and a circular refresh icon on the right.

3.3 Panel Colour

Use this option to add stock artwork to your box design. This works for both Outside and Inside.


1. Click the arrow to expand the colour controls.
2. Use the bar [1] on the right to find your preferred colour. Use the box on the left to choose your preferred shade. If you know your colour's CMYK code, you can enter the numbers as well [2].
3. Click on **REMOVE** [3] if you don't want to use a panel colour, or click on **CHOOSE** [4] to continue.
4. Click on any panels you'd like to fill with colour. Click the panels again to remove the colour.
5. Want to remove all panel colours and start again? Click on remove all [5].

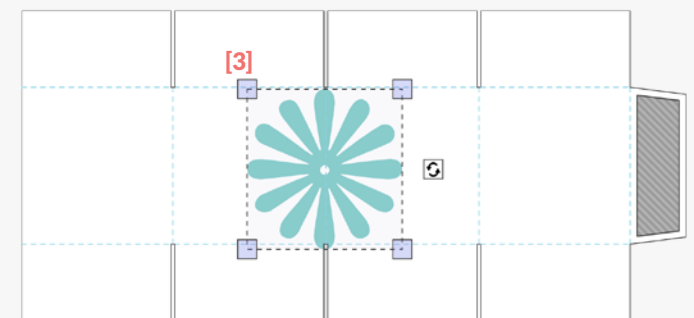
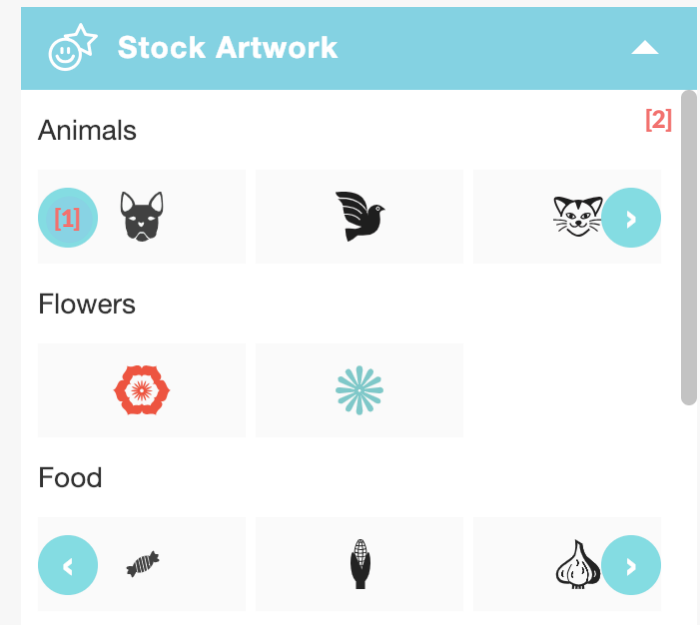


Remember: Each panel can only be 1 colour, but each panel can be a different colour.

3.4 Stock Artwork

Use this option to add stock artwork to your box design. This works for both Outside and Inside.

1. Use the left and right arrows [1] to scroll through each category. Don't forget to use the scroll bar [2] on the right to see all the artwork categories available.
2. Click and drag your stock artwork choice onto your box design.
3. You can change artwork dimensions by clicking and dragging any of the adjustment boxes [3] on the corners. Want to maintain artwork proportions? Press and hold the [SHIFT] key while dragging.
4. Rotate the artwork by clicking and dragging the **rotation box**  on the right side. Press and hold the [SHIFT] key while rotating to move the image in 45° increments.
5. Press the [BACKSPACE] or [DELETE] key to remove a selected image.




Do you have ideas for stock artwork we should add? Get in touch and let us know!

customerservice@thepackagingcompany.com

3.5 Upload Artwork

Use this option to add imagery to your box design. This works for both Outside and Inside.

1. Upload an image by using drag and drop or click on upload image [1].
2. Any images you upload will appear in a gallery. Upload as many images as you need!
3. Click and drag your image choice onto your box design [2].
4. You can change image dimensions by clicking and dragging any of the adjustment boxes [3] on the corners. Want to maintain artwork proportions? Press and hold the **[SHIFT]** key while dragging.
5. Rotate the artwork by clicking and dragging the **rotation box**  on the right side. Press and hold the **[SHIFT]** key while rotating to move the image in 45° increments.
6. Press the **[BACKSPACE]** or **[DELETE]** key to remove a selected image.



Drag and drop or

[1] UPLOAD IMAGE

Accepted image formats:
.jpg, .png, .svg

[2]



Artwork uploaded in RGB (web colors) will be converted to CMYK (print colors). This may alter the artwork color and affect the final product.


[3]

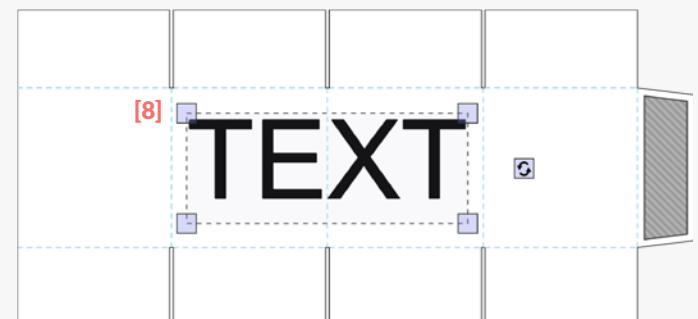
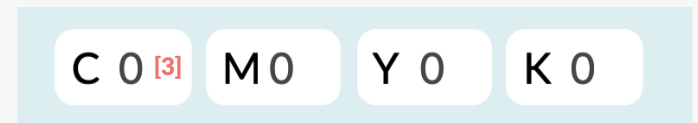


Remember: Upload your artwork in CMYK (print colours). Artwork uploaded in RGB (web colours) will be converted and this may alter artwork colours and affect the final product.

3.6 Text T

Use this option to add text to your box design. This works for both Outside and Inside.

1. Choose your preferred font from the drop-down menu [1].
2. Click the arrow on the right to expand the colour controls [2]. Use the bar on the right to find your preferred colour. Use the box on the left to choose your preferred shade. If you know your colour's CMYK code, you can enter the numbers as well [3]. Click **CHOOSE** to continue.
3. Type your desired wording in the text field [4].
4. You can use **bold** [5] and/or *italics* [6] by clicking their checkboxes.
5. Click on **ADD TEXT** [7] when you're ready to place it on your box design.
6. You can change the text dimensions by clicking and dragging any of the adjustment boxes [8] on the corners. Want to maintain text proportions? Press and hold the **[SHIFT]** key while dragging.
7. Rotate the artwork by clicking and dragging the **rotation box**  on the right side. Press and hold the **[SHIFT]** key while rotating to move the image in 45° increments.
8. Press the **[BACKSPACE]** or **[DELETE]** key to remove a selected image.



SAVING YOUR BOX DESIGN



04

4 Saving Your Box Design

Want to save your design for future orders?

1. Click on apply changes [1] to update your box.
2. Click on save design [2].
3. Login to your account. Don't have one? Now's a great time to sign up!
4. Enter a title [3] for your design and press save [4].
5. Your box design will be added to Saved Designs [5] in your account dashboard. From here you can load, edit or delete any of your designs.

[1] APPLY CHANGES

[2]  SAVE DESIGN

 ADD TO CART

Box design saving

Design Title*

DESIGN TITLE [3]

[4] SAVE

MY SAVED DESIGNS [5]

| DESIGN # | NAME | DESIGN DETAILS |
|----------|------------|---|
| 263 | Box Design | Box Style: Custom RSC - Regular Slotted Carton Material Name: 10 Pt. Paperboard Length: 4 Width: 4 Depth: 4 Finish: Kraft/Kraft Allowance: 0.1 EDIT DESIGN |
| 149 | Test | Box Style: Custom FLM - Front Lock Mailer Material Name: 32 ECT B |

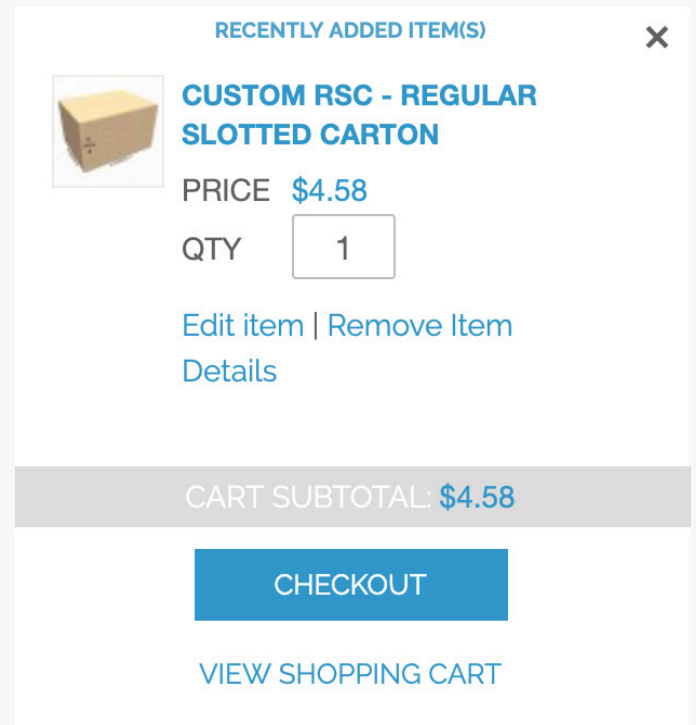
ORDERING YOUR BOX



05

5 Stock Artwork

Ready to order? This is exciting! Simply click on add to cart [1] and complete the checkout process.



Remember: If you need help at any time, don't hesitate to get in touch!

customerservice@thepackagingcompany.com